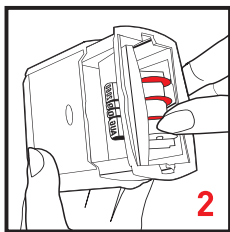
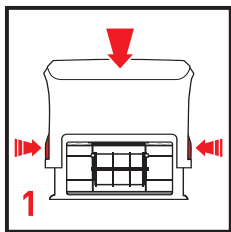
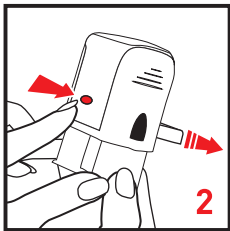
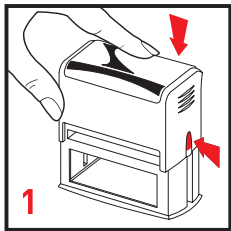


How to set the date

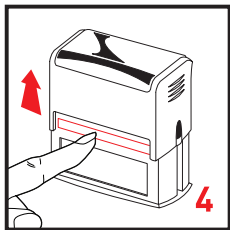
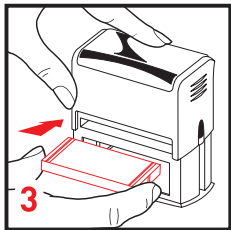


1. Press stamp down until date bands are exposed. Press side lock buttons until stamp clicks into place.
2. Turn band wheels until the desired date is set. Depress the handle to release the side lock buttons.

How to replace your ink pad



1. Press stamp downward while pressing side lock buttons until handle clicks into place.
2. Press front eject button to release the old ink pad.
3. With the foam side facing down, slide the new ink pad into the stamp.



4. Push the new ink pad in until it clicks into place. Depress the handle to release the side lock buttons. Your stamp is now ready to use!