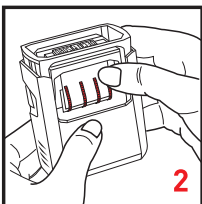
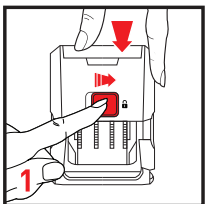
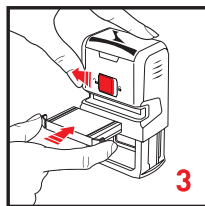
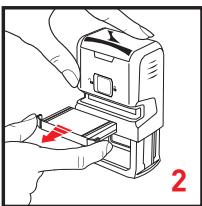
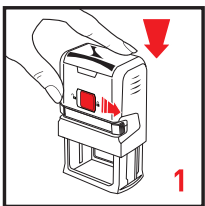


How to set the date



1. Press stamp all the way down and slide back locking button into the lock position.
2. Turn band wheels until the desired date is set. Slide back locking button into the unlock position to release the stamp handle.

How to replace your ink pad



1. Press stamp downward and slide back locking button to the right to lock the handle into place.
2. Squeezing the grip tabs, pull the old ink pad out from the stamp.
3. Holding the new ink pad by the grip tabs, slide the new ink pad into the stamp with the foam side facing down until it clicks into place. Slide the back locking button to the unlock position to release the stamp handle. Your stamp is now ready to use!